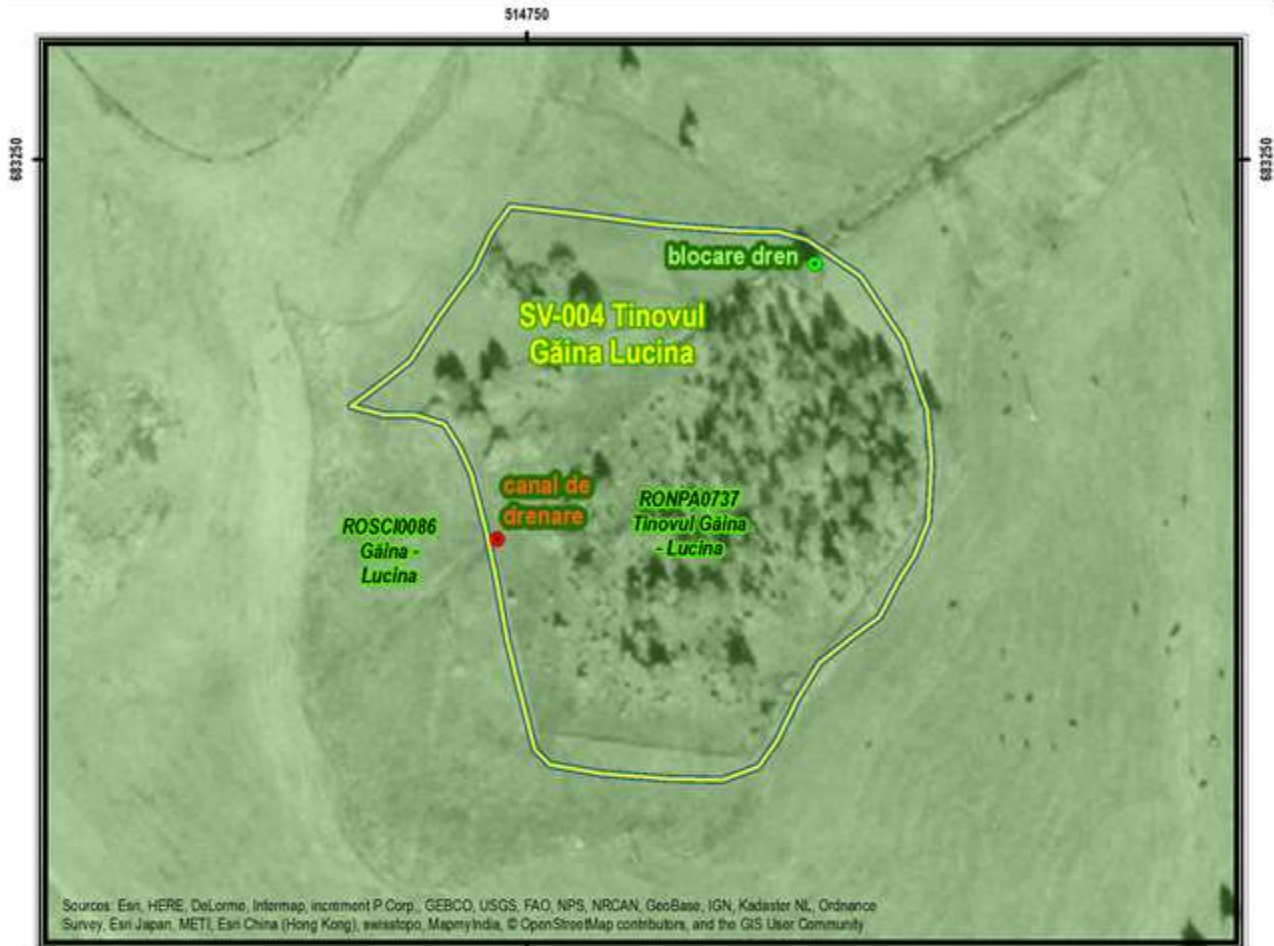


Annex 9 Restoration schemes NE-1 Region

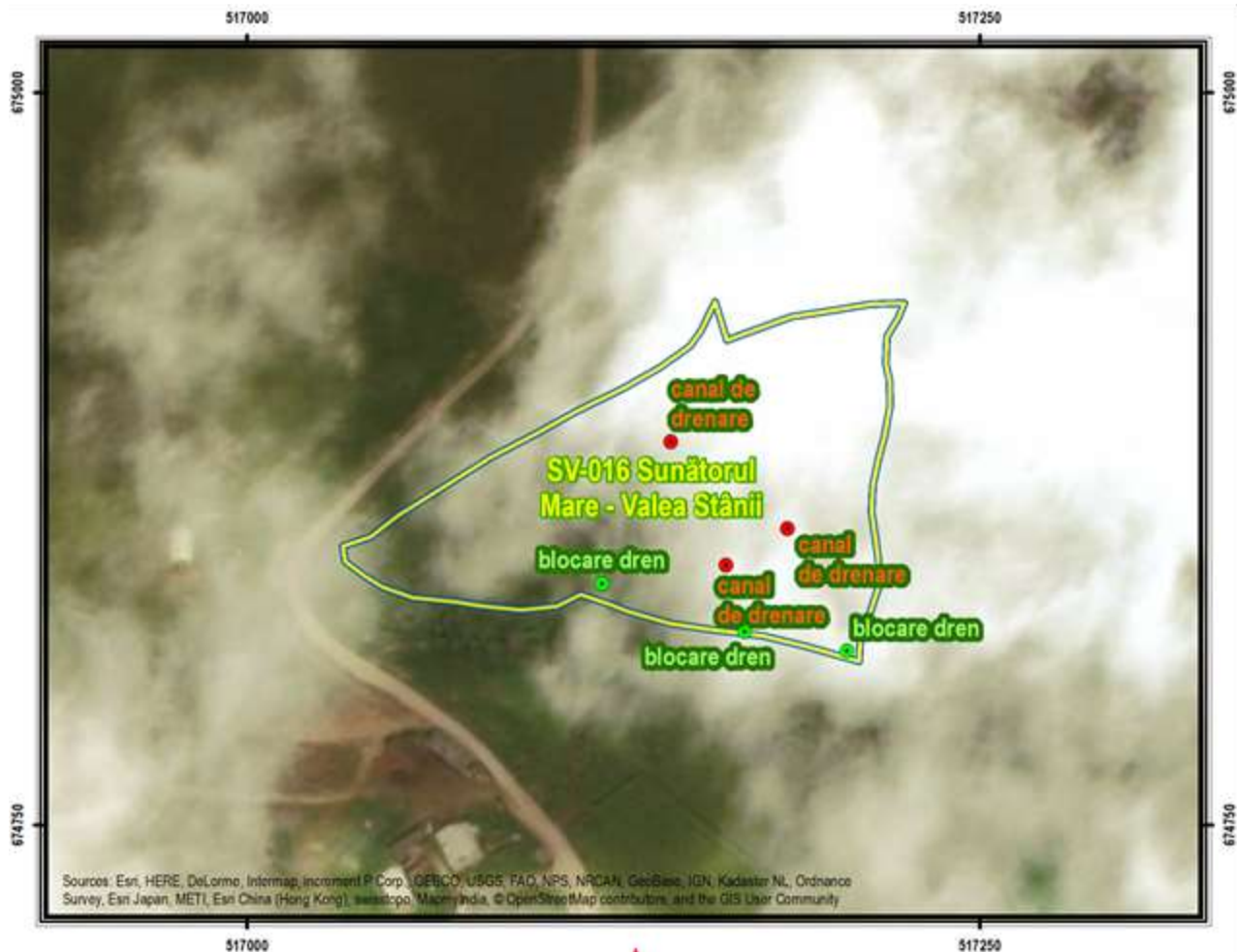
Restoration scheme no. 1

SV-004 – Tinovul Găina Lucina



Restoration scheme no. 2

SV-016 – Sunătorul Mare – Valea Stânii

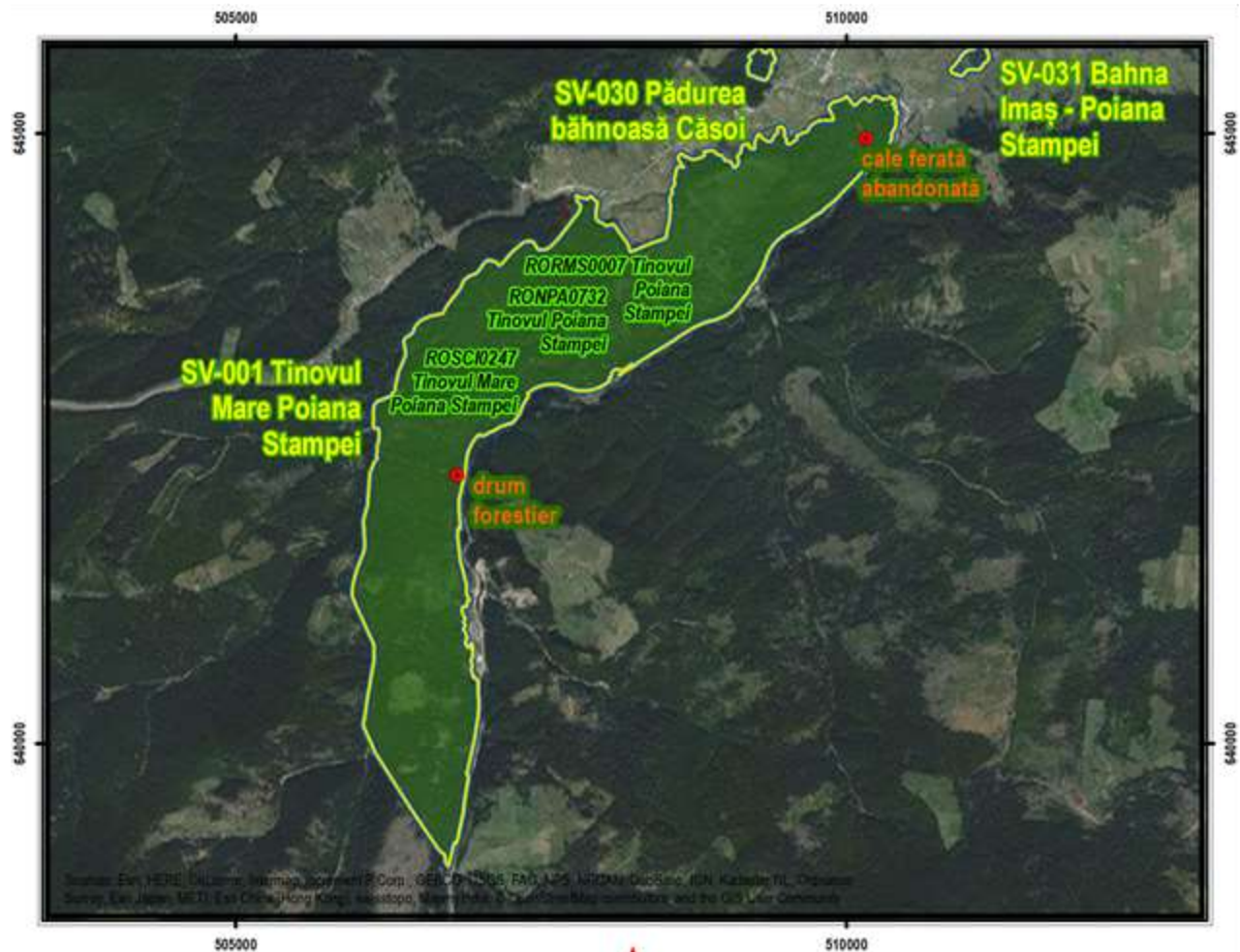


Restoration scheme no. 3

SV-001 – Mlaștina Tinovul Mare Poiana Stampei

SV-030 – Pădurea băhnoasă Căsoi

SV-031 – Bahna Imaș - Poiana Stampei



Restoration scheme no. 4

SV-020 – Tinovul de lângă drum - Lucina

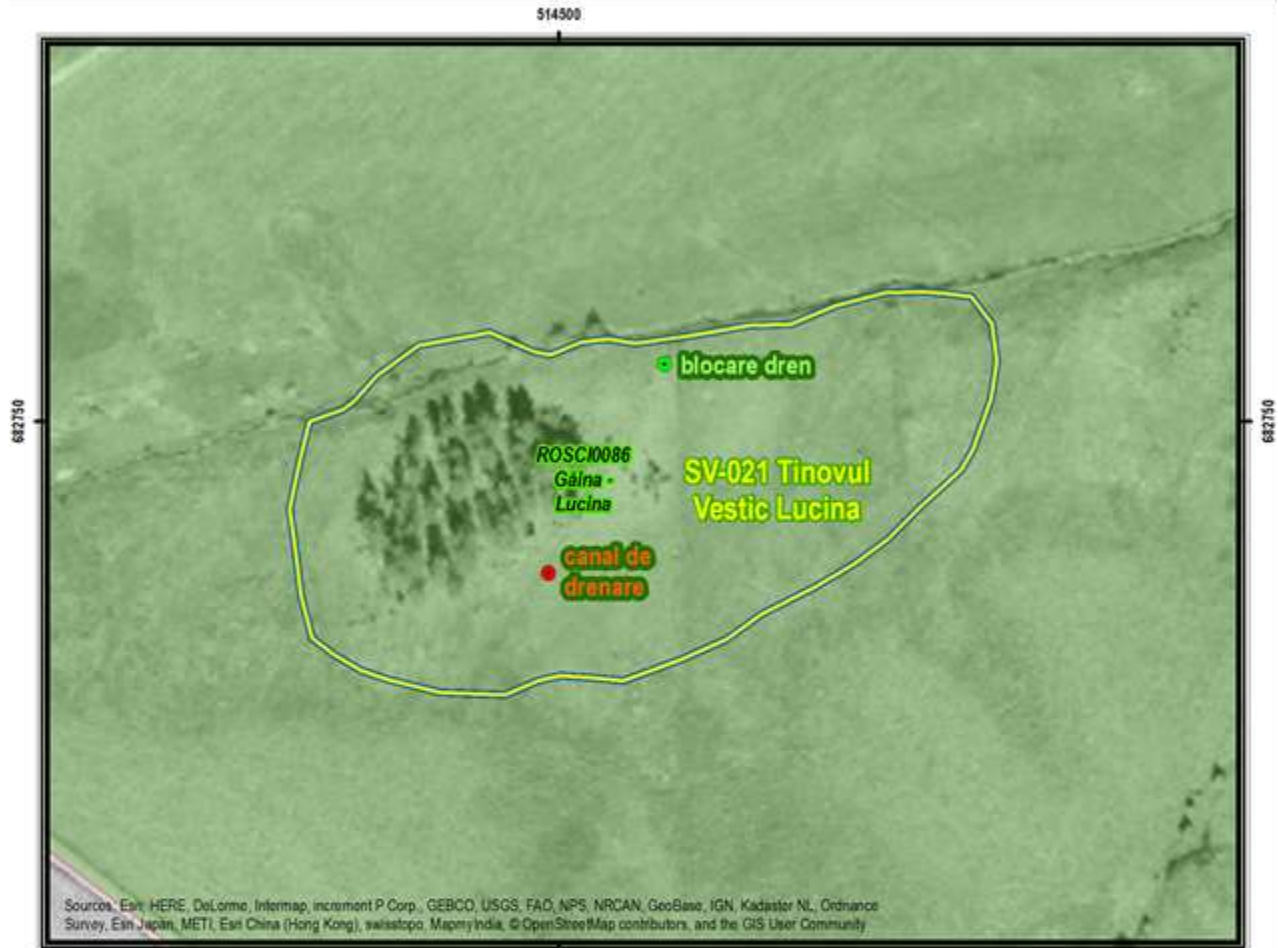


Sources: Esri, HERE, DeLorme, Intermap, increment P Corp., GEBCO, USGS, FAO, NPS, NRCAN, GeoBase, IGN, Kadaster NL, Ordnance Survey, Esri Japan, METI, Esri China (Hong Kong), swisstopo, MapmyIndia, © OpenStreetMap contributors, and the GIS User Community

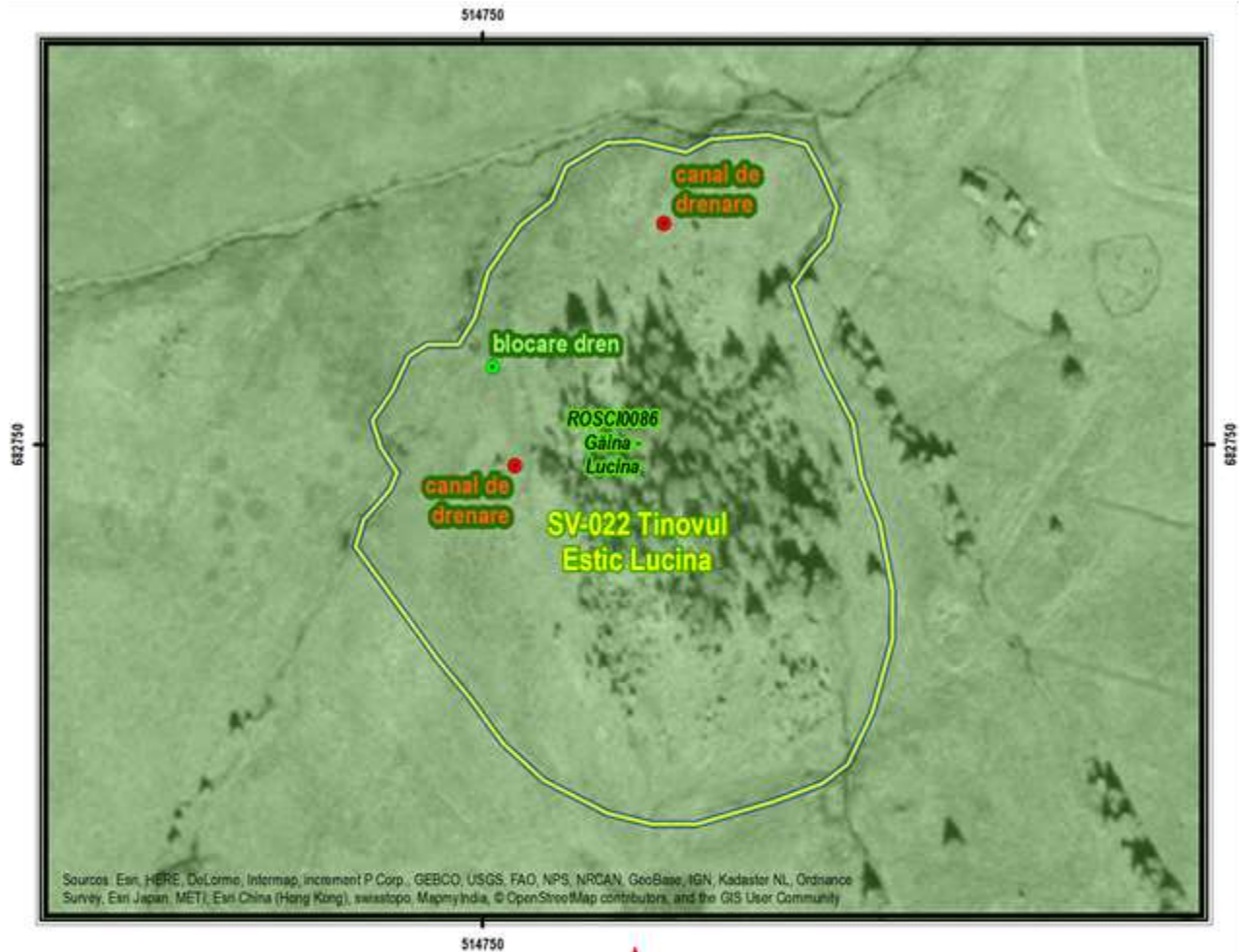


Restoration scheme no. 5

SV-021 – Tinovul Vestic Lucina



Restoration scheme no. 6 SV-022 – Tinovul Estic Lucina



Restoration scheme no. 7

SV-026 – Tinovul Balhului Coșna



Source: Esri, HERE, DeLorme, Intermap, increment P Corp., GEBCO, USGS, FAO, NPS, NRCAN, GeoBase, IGN, Kadaster NL, Ordnance Survey, Esri Japan, METI, Esri China (Hong Kong), Swisstopo, Mapbox, © OpenStreetMap contributors, and the GIS User Community



Source: Esri, HERE, DeLorme, Intermap, increment P Corp., GEBCO, USGS, FAO, NPS, NRCAN, GeoBase, IGN, Kadaster NL, Ordnance Survey, Esri Japan, METI, Esri China (Hong Kong), Swisstopo, Mapbox, © OpenStreetMap contributors, and the GIS User Community

Restoration scheme no. 8

SV-027 – Terenul tinovos din spatele școlii Coșna



Restoration scheme no. 9

SV-028 – Teșna Românești



Restoration scheme no. 10

SV-029 – Teșna

