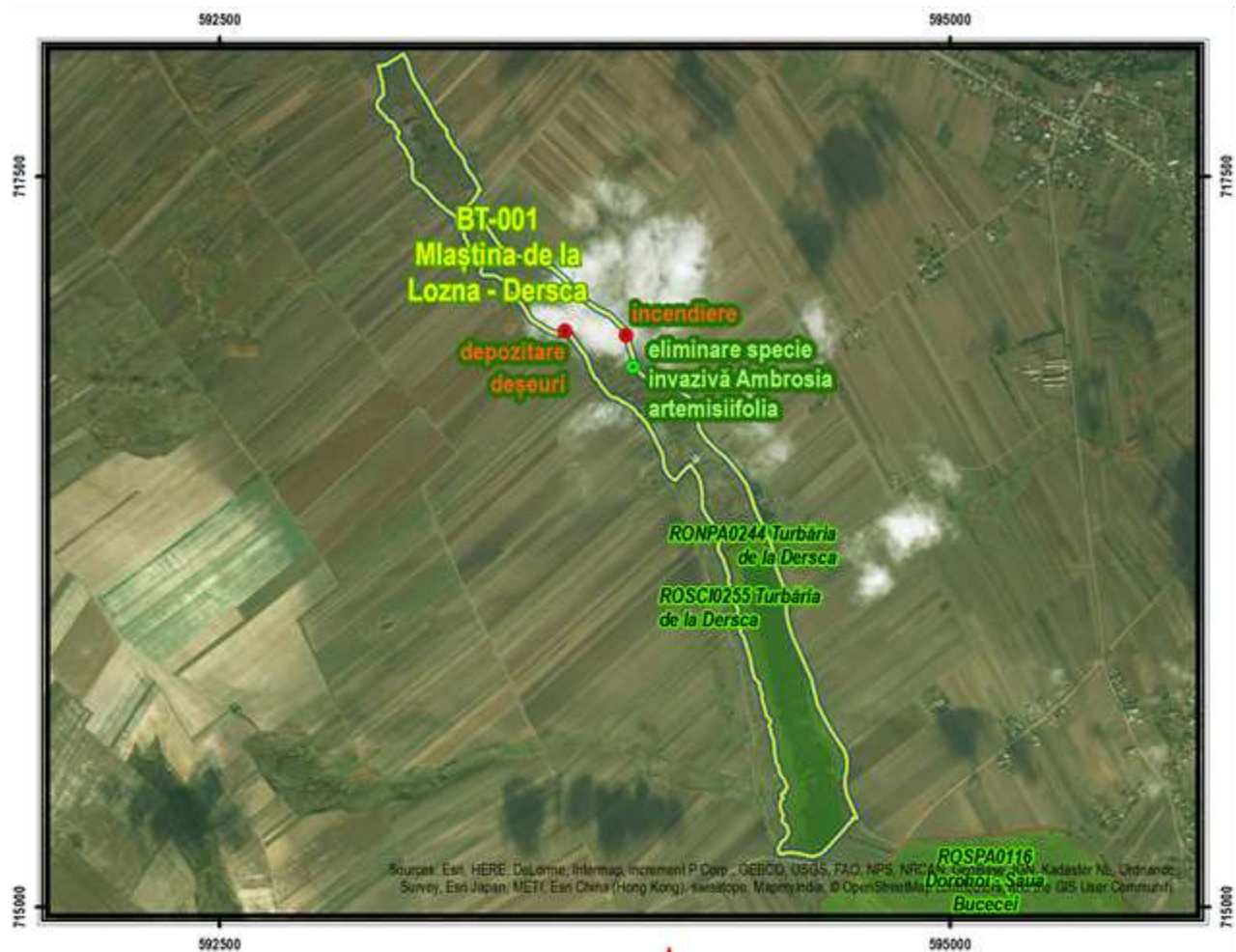


Anexa 9 Scheme de restaurare pentru Regiunea NE-2

Schema de restaurare nr. 1

BT-001 – Mlaștina de la Lozna – Dersca



Schema de restaurare nr. 2 SV-005 – Mlaștina Drăgoioasa



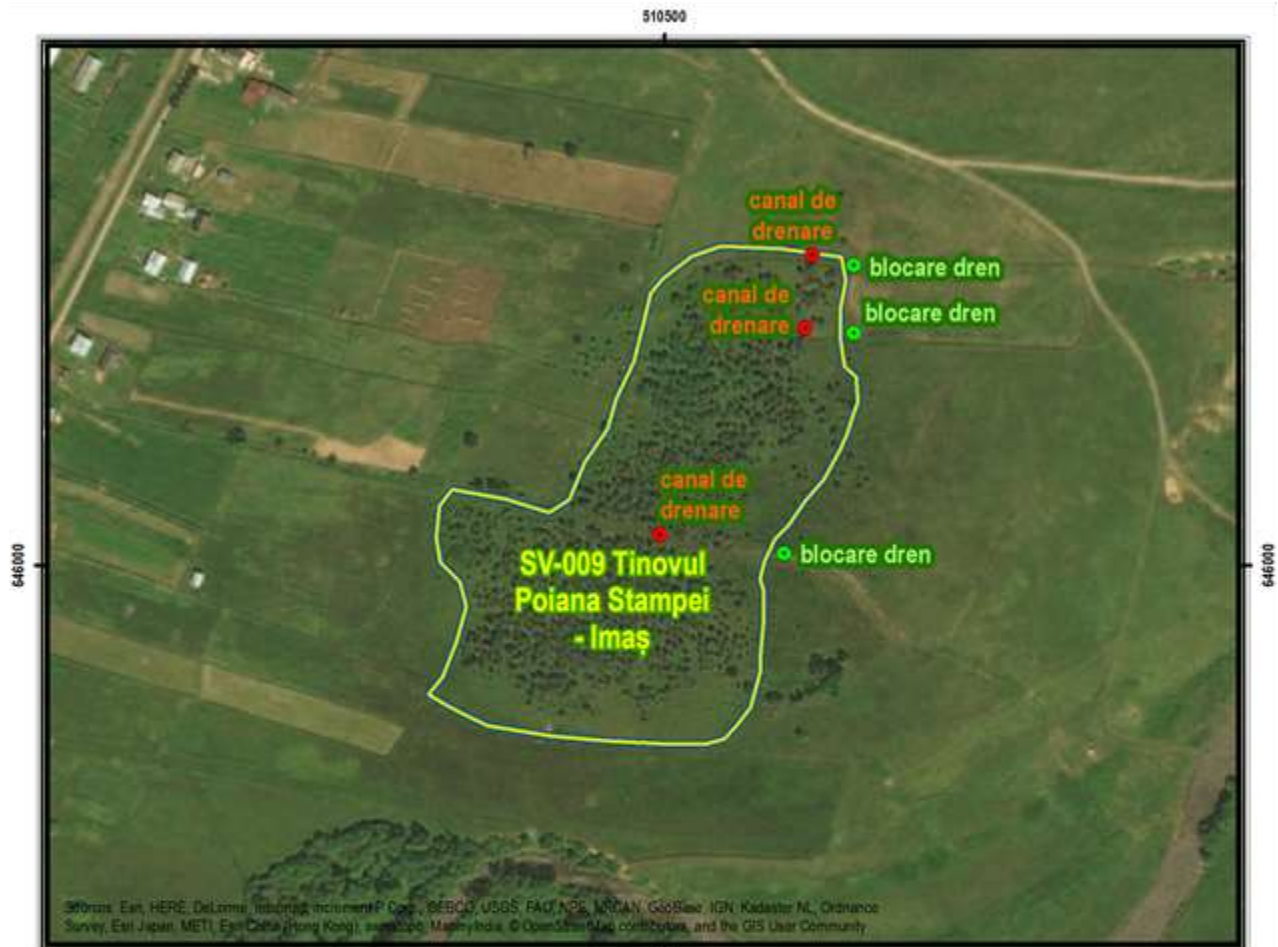
Schema de restaurare nr. 3

SV-008 – Poiana Stampei – Hotelul comunal



Schema de restaurare nr. 4

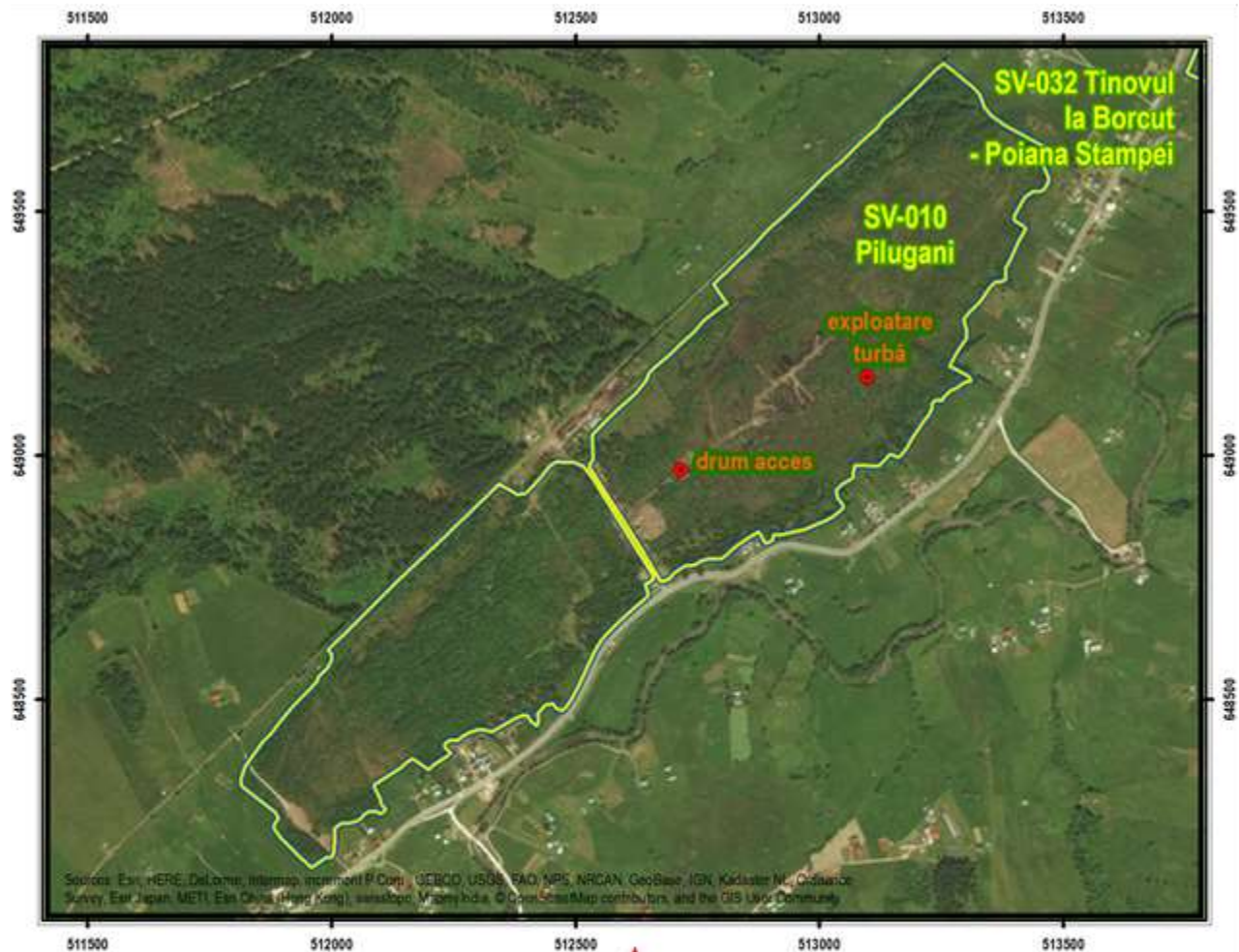
SV-009 – Tinovul Poiana Stampei - Imaș



Schema de restaurare nr. 5

SV-010 – Pilugani

SV-032 – Tinovul la Borcut – Poiana Stampei



Source: Esri, HERE, DeLorme, Intermap, increment P Corp., GEBCO, USGS, FAO, NPS, NRCAN, GeoBase, IGN, Kadaster NL, Ordnance Survey, Esri Japan, METI, Esri China (Hong Kong), Swisstopo, Mapbox India, © OpenStreetMap contributors, and the GIS User Community

● impact

○ ecosistem de turbărie

0 50 100 150 200 250 300 metri
1:15000

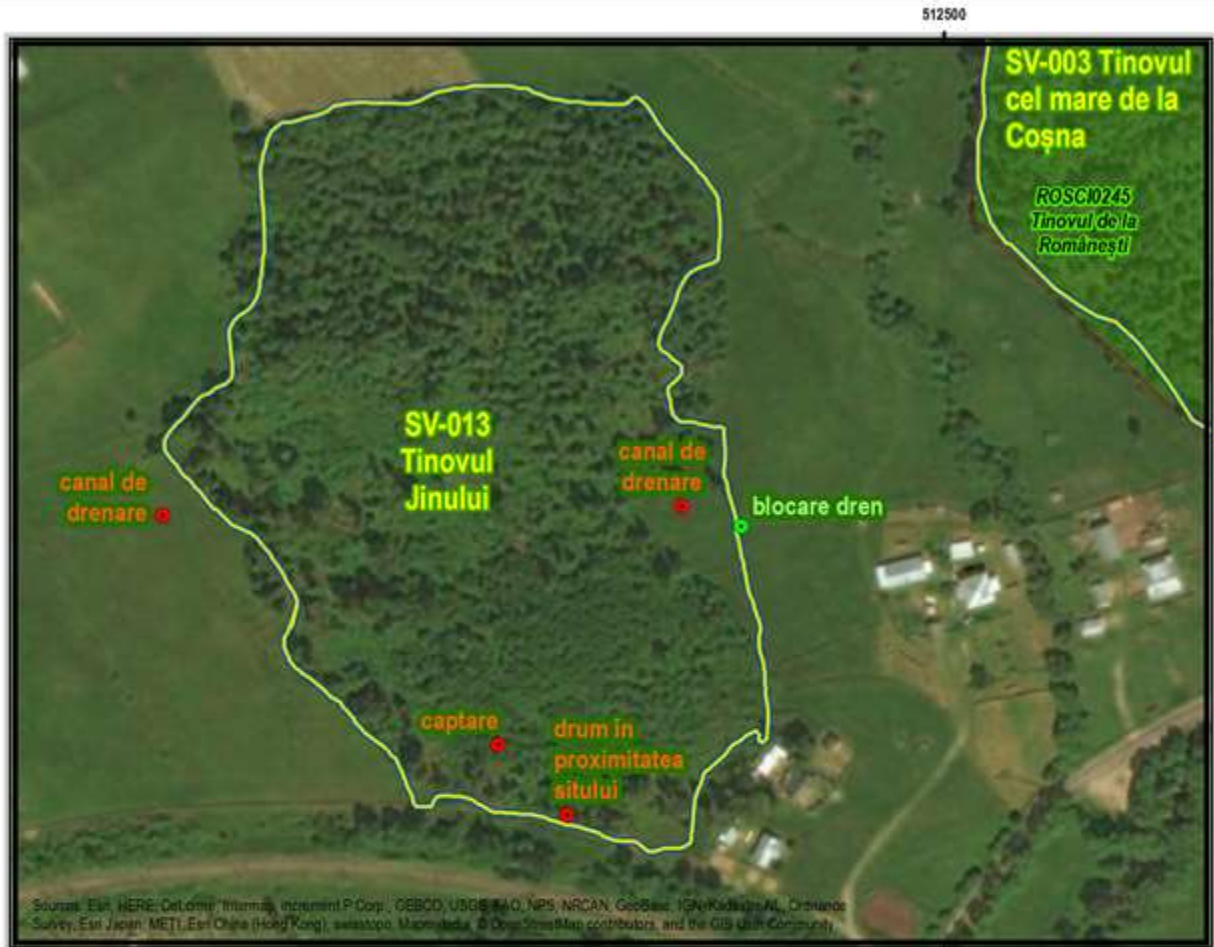
Sistem de coordonate:
Pulkovo 1942 Ad 58 Stereo 70

Data realizării hărții: aprilie 2017
Cartografie digitală / GIS: Ciprian Samoilă

Ecosisteme de turbărie: IBB - www.ibbi.ro/peatro

Schema de restaurare nr. 7

SV-013 – Tinovul Jinului

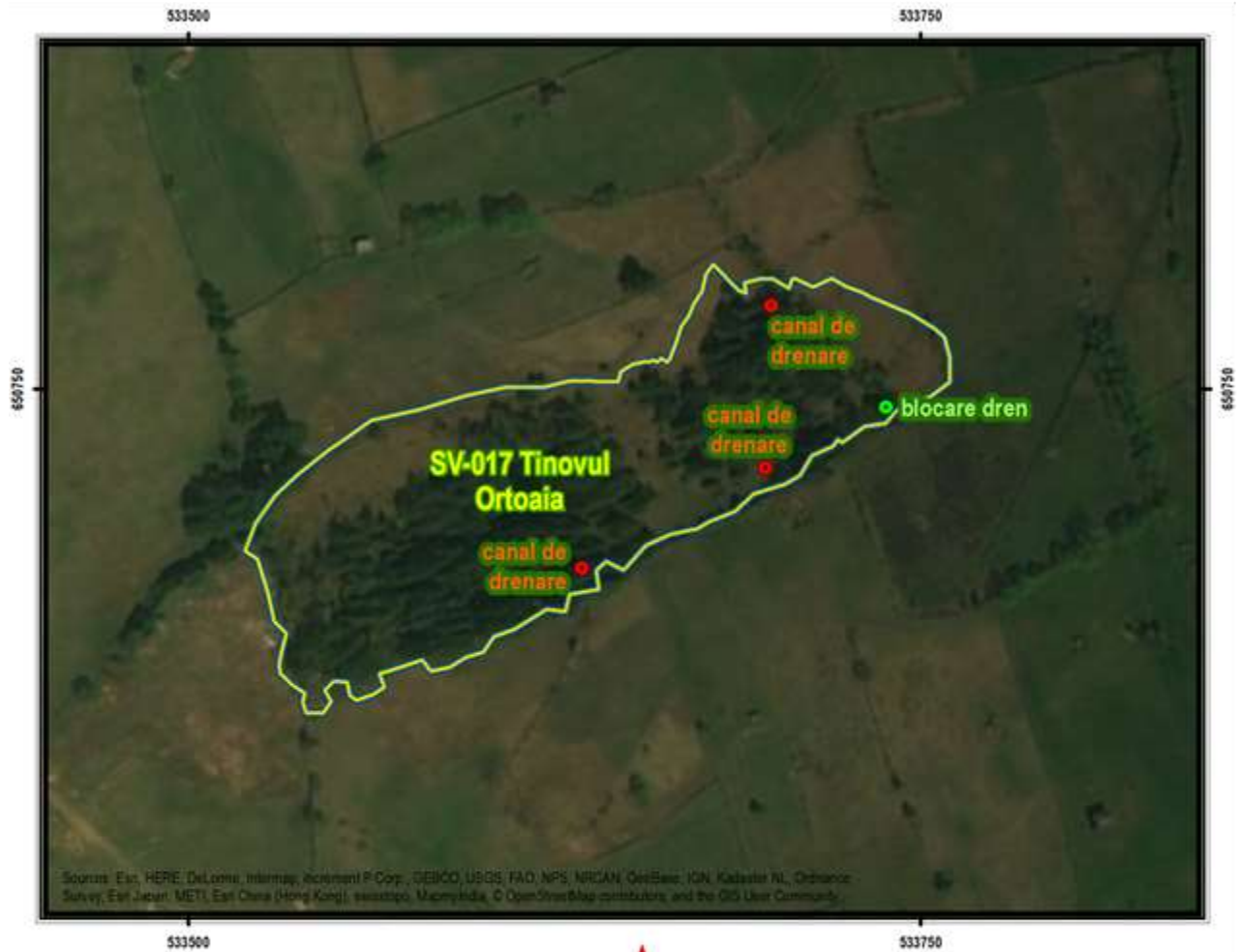


Source: Esri, HERE, DeLorme, Intermap, increment P Corp., GEBCO, USGS, FAO, NPS, NRCAN, GeoBase, IGN, Kadaster NL, Ordnance Survey, Esri Japan, METI, Esri China (Hong Kong), Swisstopo, Mapbox, © OpenStreetMap contributors, and the GIS User Community



Schema de restaurare nr. 8

SV-017 – Tinovul Ortoaia



Source: Esri, HERE, DeLorme, Intermap, increment P Corp., GEBCO, USGS, FAO, NPS, NRCAN, GeBCO, IGN, Kadaster NL, Ordnance Survey, Esri Japan, METI, Esri China (Hong Kong), Swisstopo, Mapbox, © OpenStreetMap contributors, and the GIS User Community



Schema de restaurare nr. 9

SV-023 – Tinovul Botoș - Ciocănești



Schema de restaurare nr. 11

SV-025 – Bahnele Bancului 2

