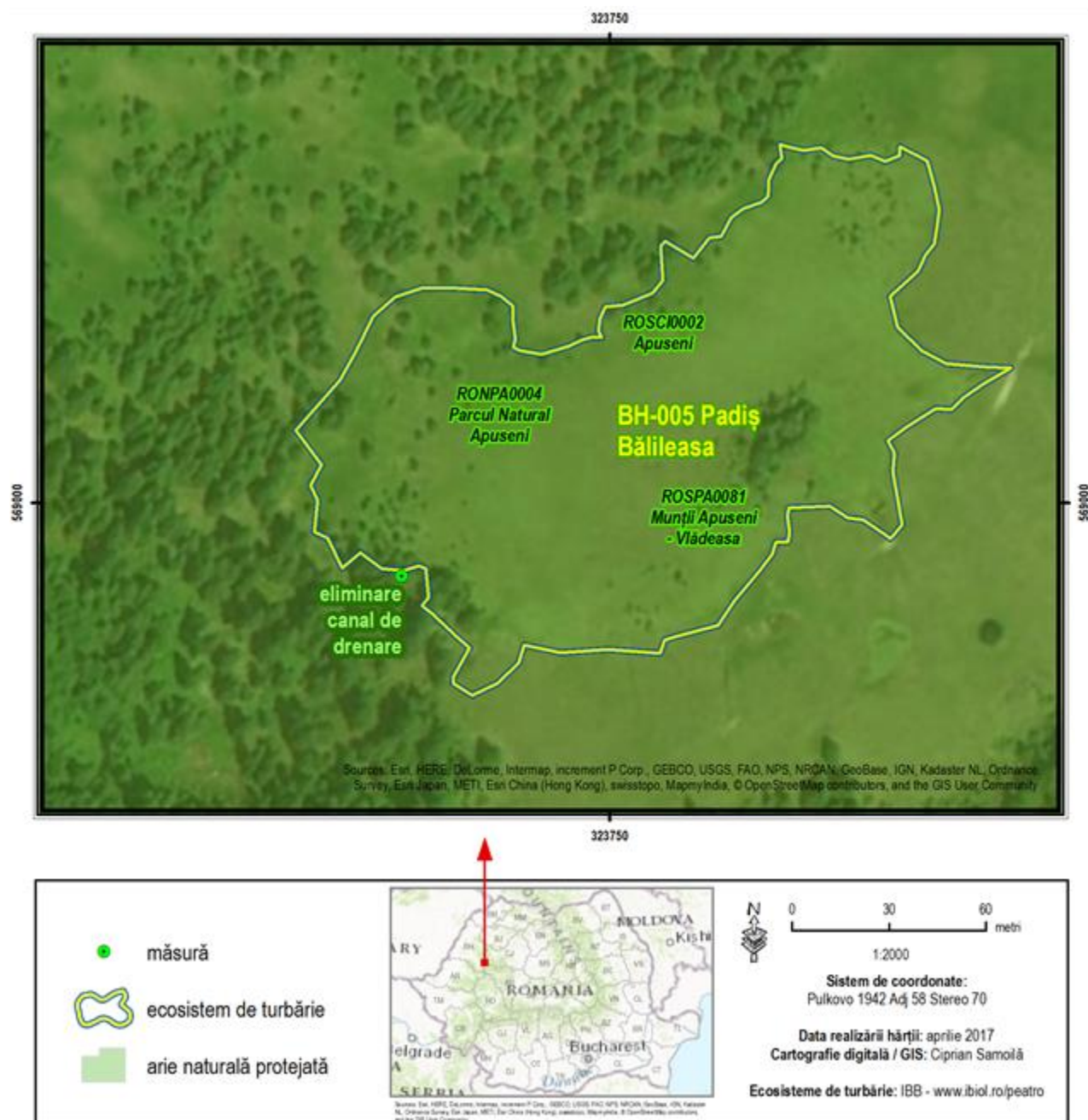


Annex 7.1 Restoration schemes NW Region

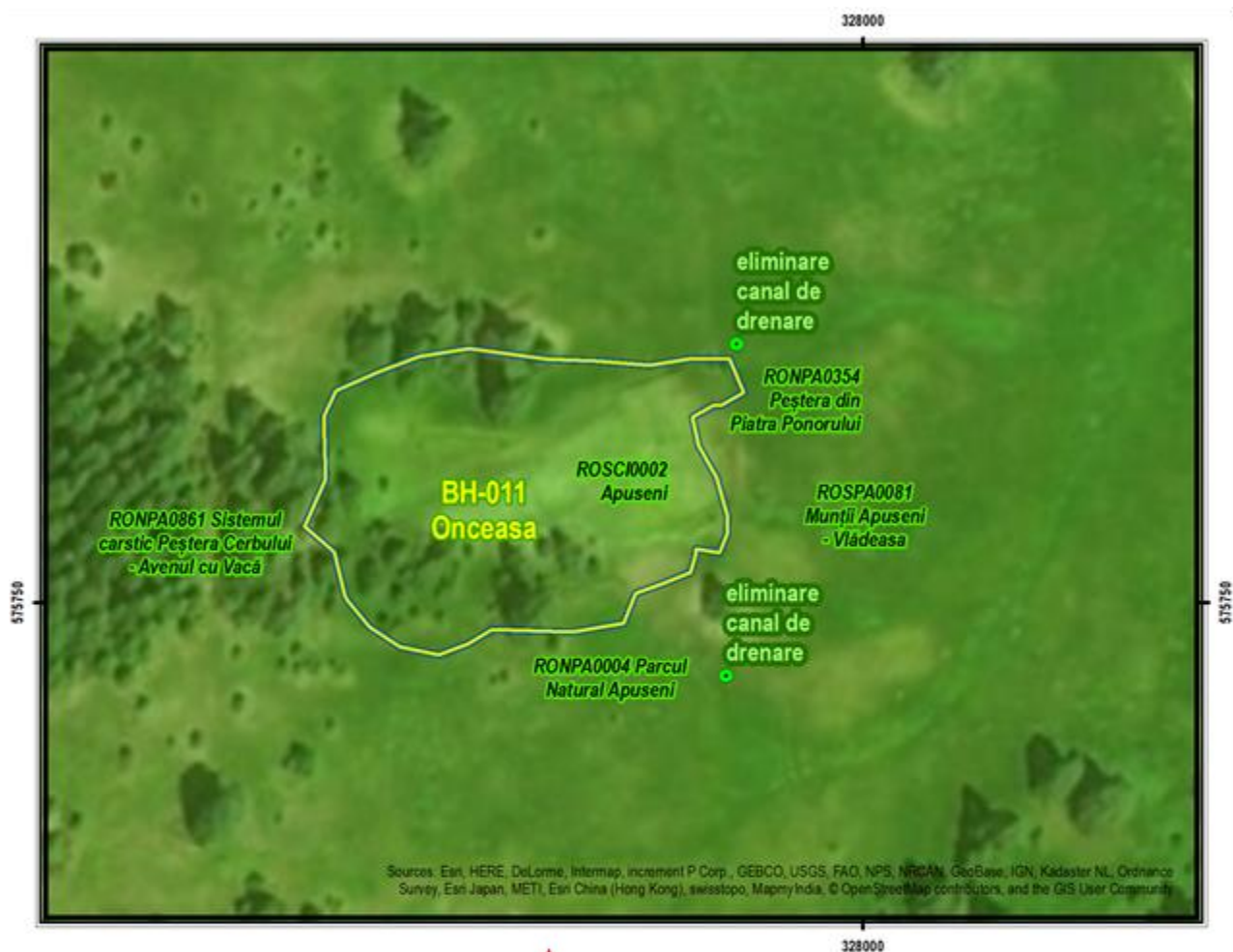
Restoration scheme no. 1

BH-005 – Padiș - Bălileasa



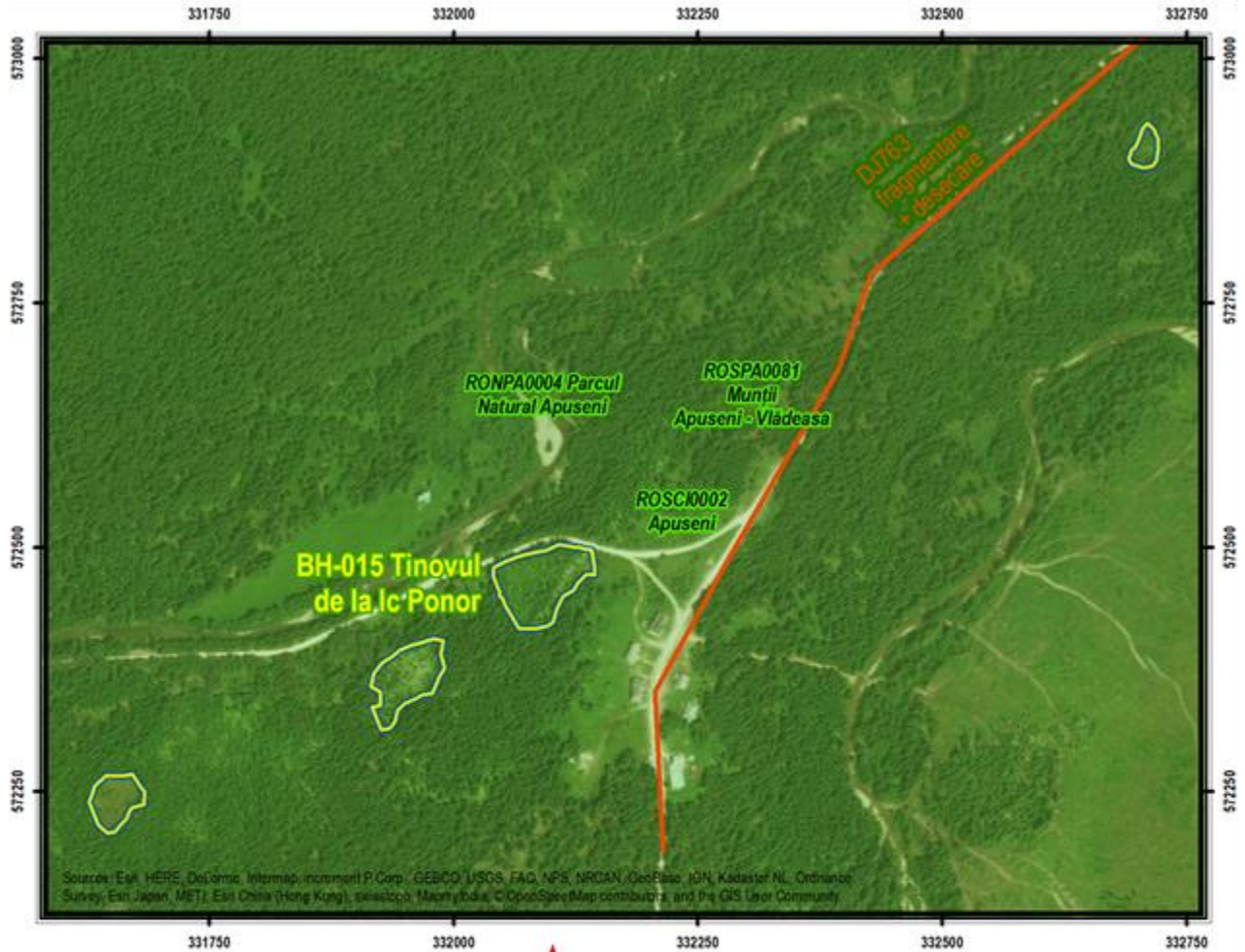
Restoration scheme no. 2

BH-011 – Onceasa



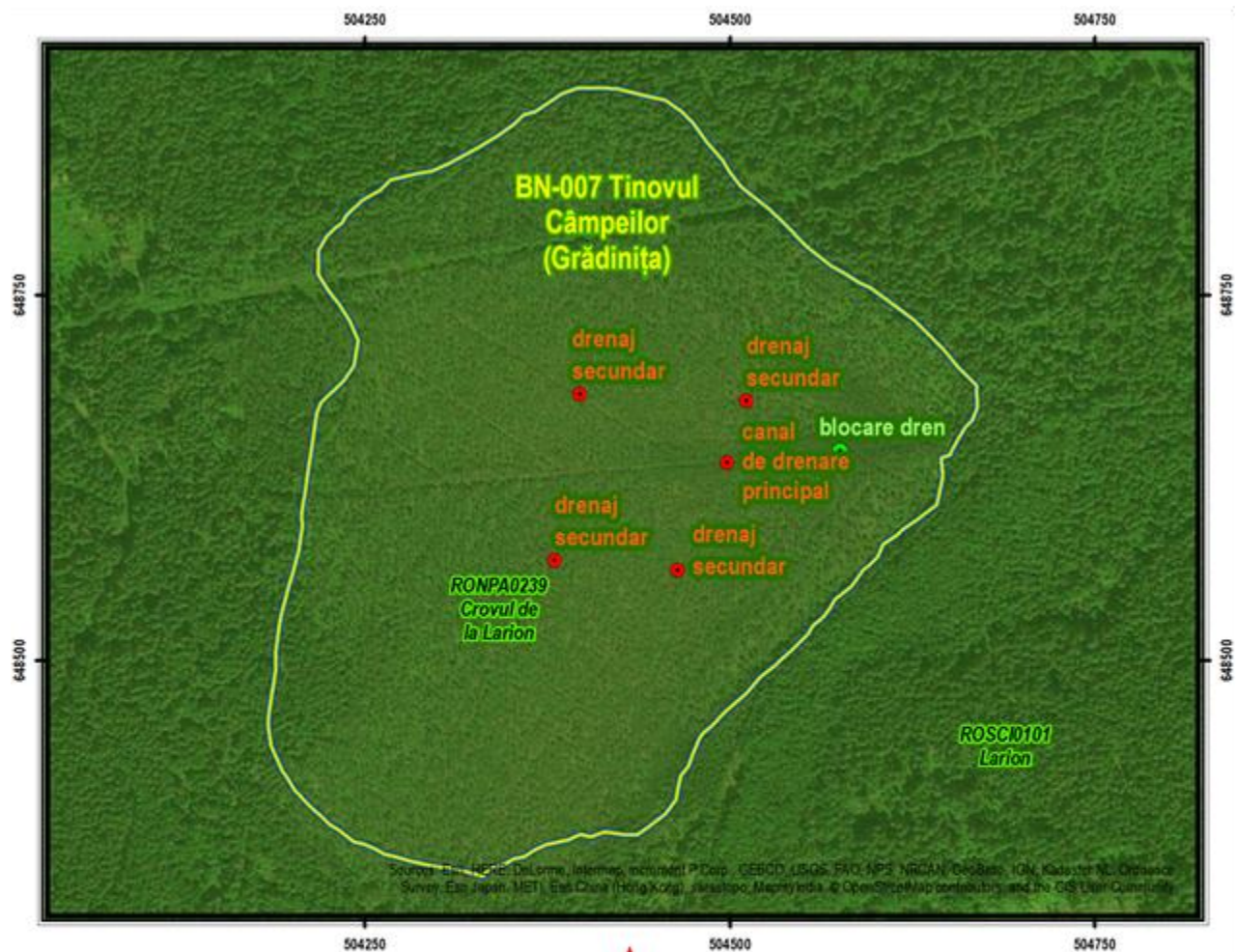
Restoration scheme no. 3

BH-015 – Tinovul de la Ic Ponor



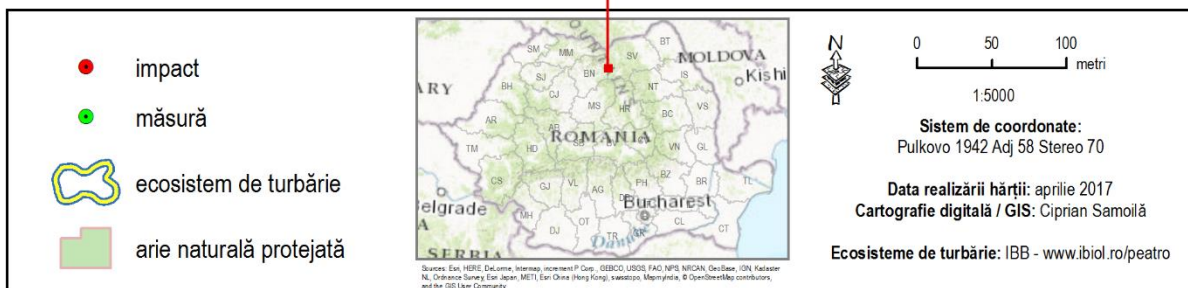
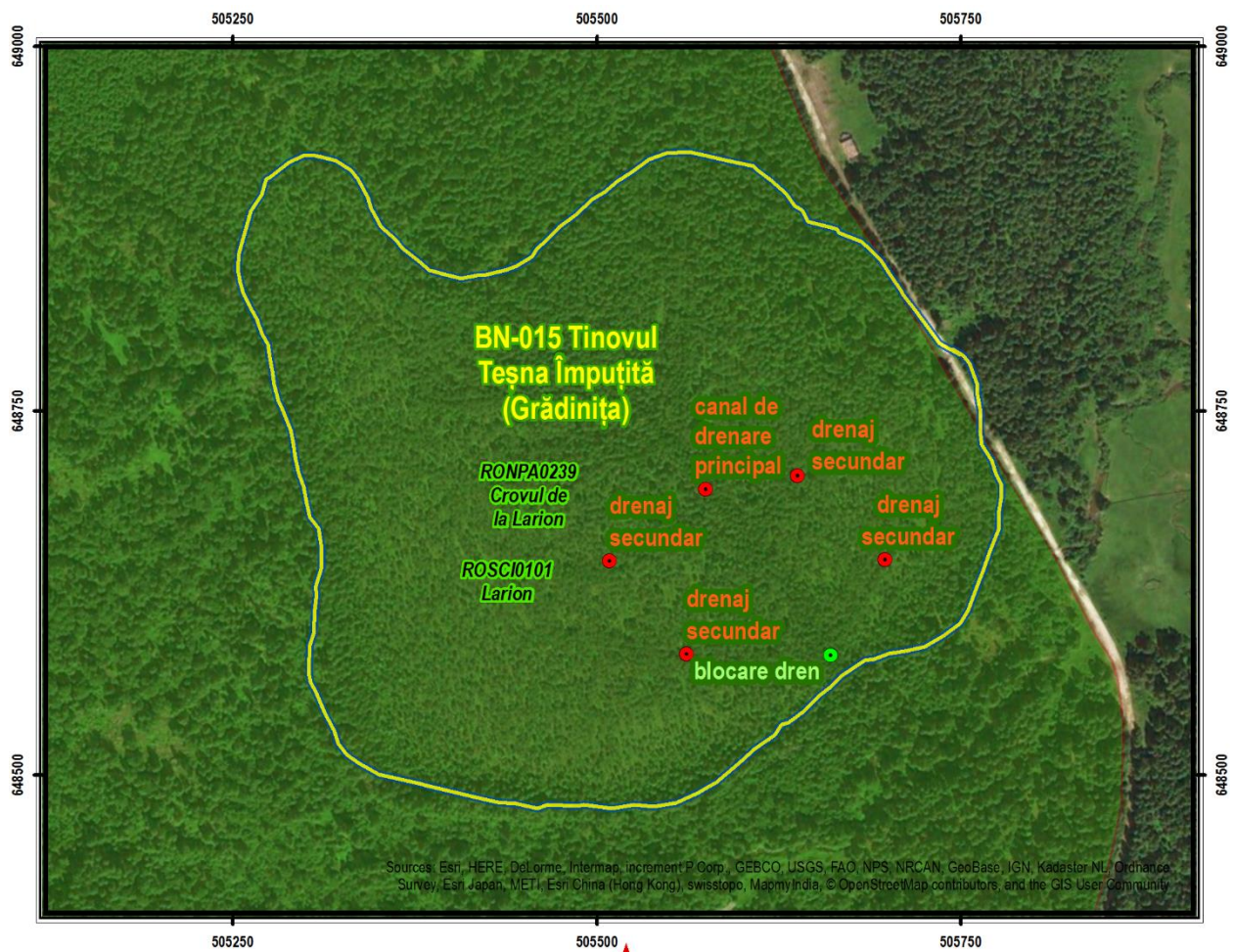
Restoration scheme no. 4

BN-007 – Tinovul Câmpenilor (Grădinița)



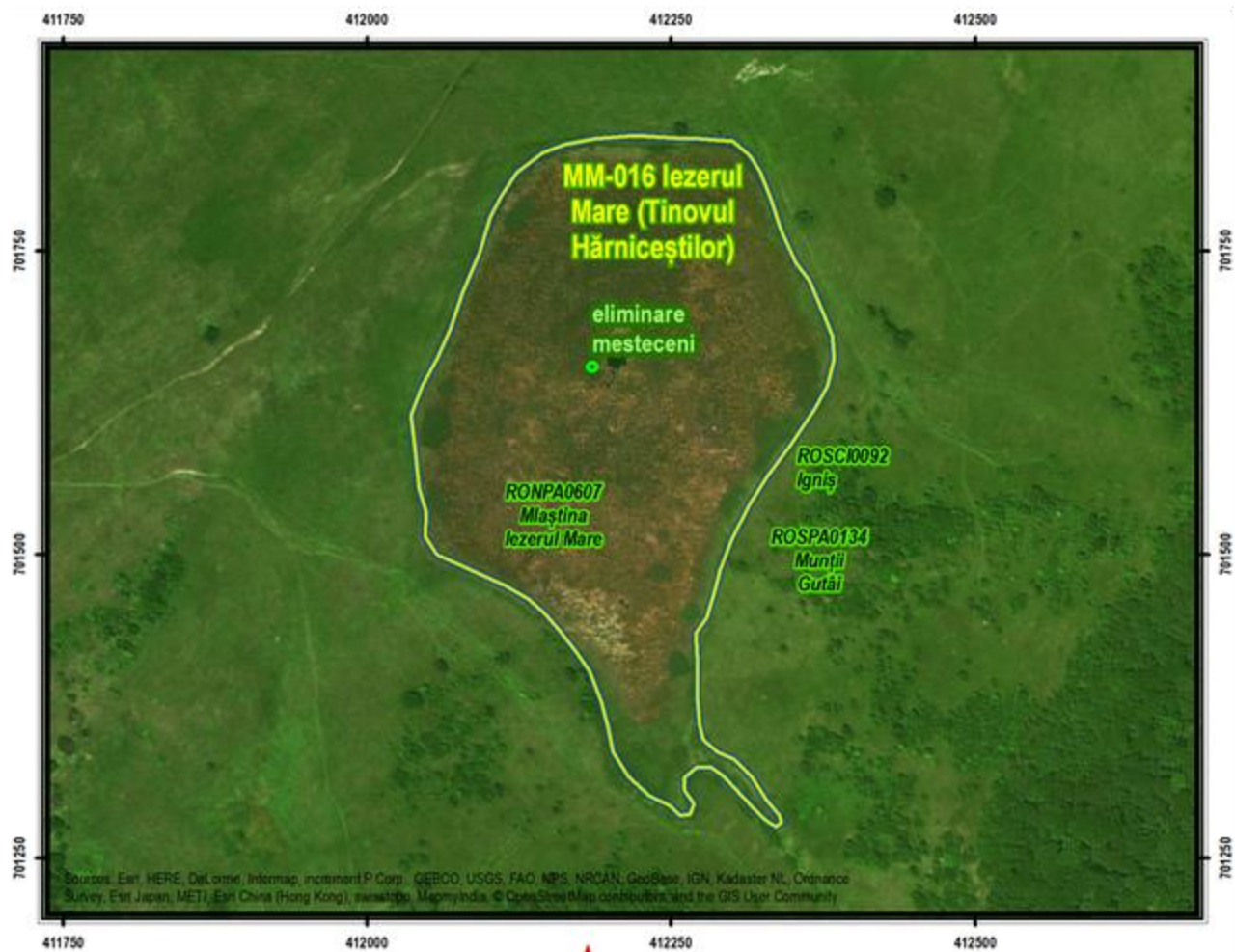
Restoration scheme no. 5

BN-015 – Tinovul Țesna Împutiță (Grădinița)



Restoration scheme no. 6

MM-016 – lezerul Mare (Tinovul Hărnicștilor)



Restoration scheme no. 7

MS-007 – Mlaștina Ciobotani 1



Restoration scheme no. 8

SJ-001 – Mlaștina de la Iaz







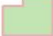
322500



Restoration scheme no. 9

BZ-001 – Lacul Sec



 măsură	 <small>Sources: Esri, HERE, DeLorme, Intermap, increment P Corp., GEBCO, USGS, FAO, NPS, NRCAN, GeoBase, IGN, Kadaster NL, Ordnance Survey, Esri Japan, METI, Esri China (Hong Kong), swisstopo, MapmyIndia, © OpenStreetMap contributors, and the GIS User Community</small>	 0 40 80 metri 1:2500
 ecosistem de turbărie		
 arie naturală protejată		
		<p>Sistem de coordonate: Pulkovo 1942 Adj 58 Stereo 70</p> <p>Data realizării hărții: aprilie 2017 Cartografie digitală / GIS: Ciprian Samoilă</p> <p>Ecosisteme de turbărie: IBB - www.ibbi.ro/peatro</p>

Restoration scheme no. 10

BZ-003 – Lacul Manta

